

# **Gun Violence in America:** ***One Week, Six Cities, and the*** ***Implications***

Washington, DC  
April 26, 2012



# **PERF Gun Violence Initiative:**

## **“National Spotlight on Gun Violence” Project**

- **Two-tiered investigation** of gun crime in America
  1. **National survey** of police departments
  2. **Case studies** of six cities
- **Goals:**
  - To **identify trends in gun crime and policy,**
  - To **develop and initiate a national research agenda, and,**
  - To assist **practitioners and policy makers in more effectively addressing their gun crime challenges.**

# “National Spotlight” Initiative Components

- **National Survey:**
  - **Surveyed over 1,000 local police agencies; 55.1% response rate (588/1,067 surveys)**
  - **Of respondents:**
    - Average number sworn officers: **579** (Median: 187)
    - Average population of agencies’ jurisdiction: **553,119** (Median: 130,000)
- **Six Case Study Department Sites:**
  1. Minneapolis
  2. Milwaukee
  3. Austin
  4. San Diego
  5. Philadelphia
  6. Toronto

# Plenary Presentation Overview

- What is the nature of gun crime in the U.S.? In the selected cities?
- Where are the crime guns coming from?
- What are the costs of gun violence?
- What are the most effective strategies to combat gun violence?
- Where do we go from here? Where should we be focusing our efforts?

# Nature of Gun Violence

*PERF Survey Results: What is the nature of gun violence in the U.S.?*

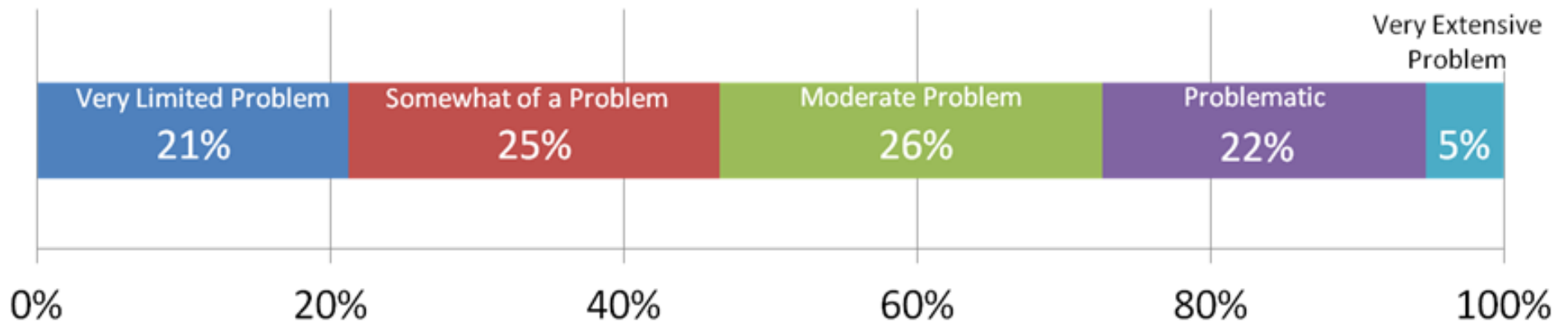
# Defining 'Gun Crimes'—Getting the Terminology Straight...

## *UCR Definitions:*

- **Homicide—Murder and Non-negligent Manslaughter (1a)** The willful, non-negligent killing of one human being by another. **We will only be discussing gun-related homicides.**
- **Robbery—Firearm** The taking or attempting to take anything of value from ...a person or persons in which **any firearm is used as a weapon or employed as a means of force to threaten the victim** or put the victim in fear. **Attempted robberies are included in this category.**
- **Aggravated Assault—Firearm** An unlawful attack ... for the purpose of inflicting **severe or aggravated bodily injury**. **This includes all assaults in which a firearm of any type is used or is threatened to be used.**

# The National Picture: PERF Survey Findings

Survey: How would you characterize the level of gun violence in your jurisdiction?



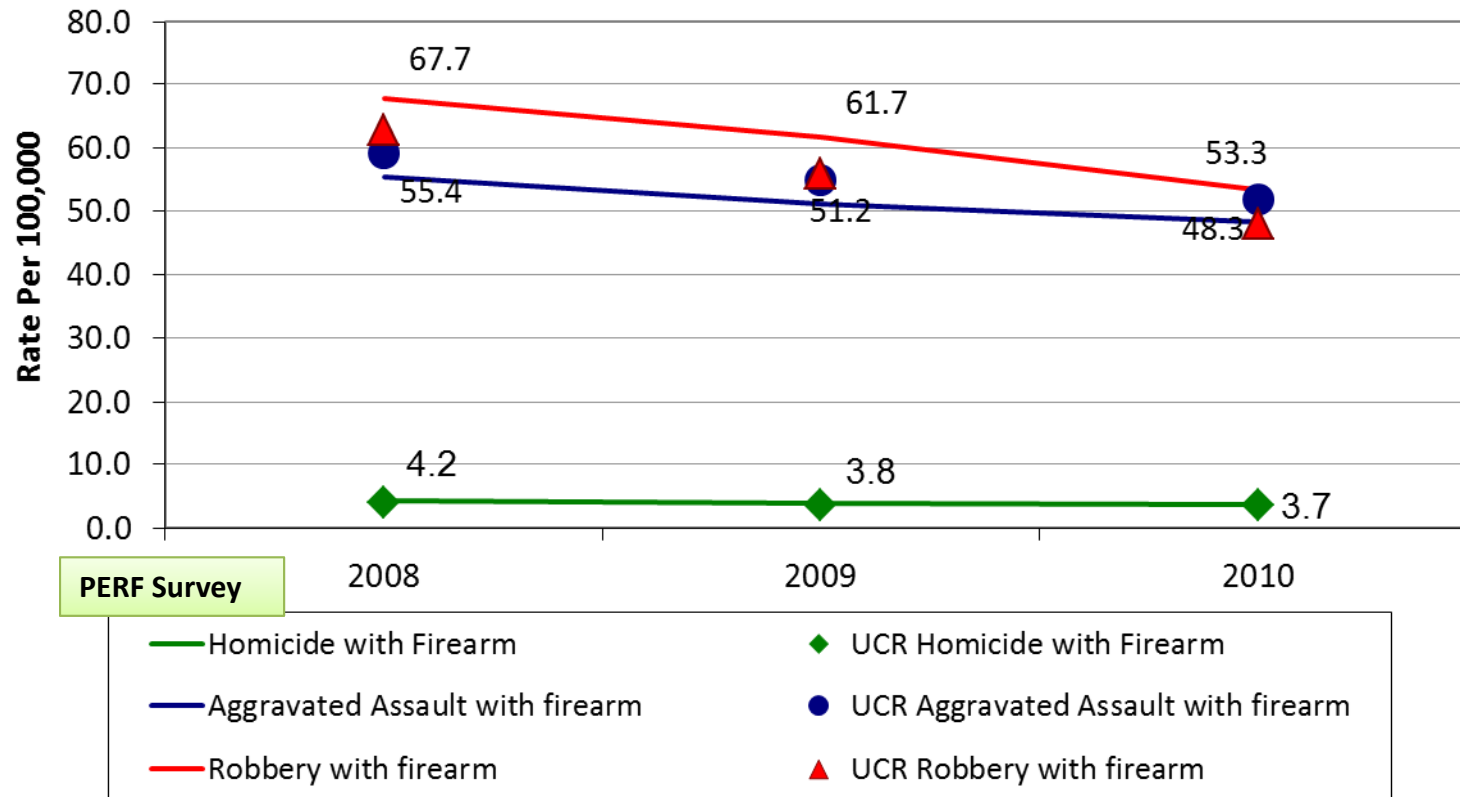
- About ½ of respondents thought that the gun crime problem in their jurisdiction was either a “very limited problem” or “somewhat of a problem”

- When asked to list key factors influencing the level of gun crime in a jurisdiction, the agencies with “problematic” or “very extensive” gun crime most commonly cited: **gangs (45.1%)** **drugs (41.7%)**

**Large agencies (500+ officers) were the most likely (49%) to respond that gun violence is problematic or a very extensive problem while small agencies (0-150 officers) were the least likely (13%).**

# PERF Survey Findings: Gun Crime Statistics

Survey: Please provide your gun crime statistics for the past three years  
(presented as a rate per 100,000)



- Overall, gun-related homicides, robberies and aggravated assaults are down from 2008 to 2010.
- PERF's survey findings are relatively consistent with UCR Summary Report data.



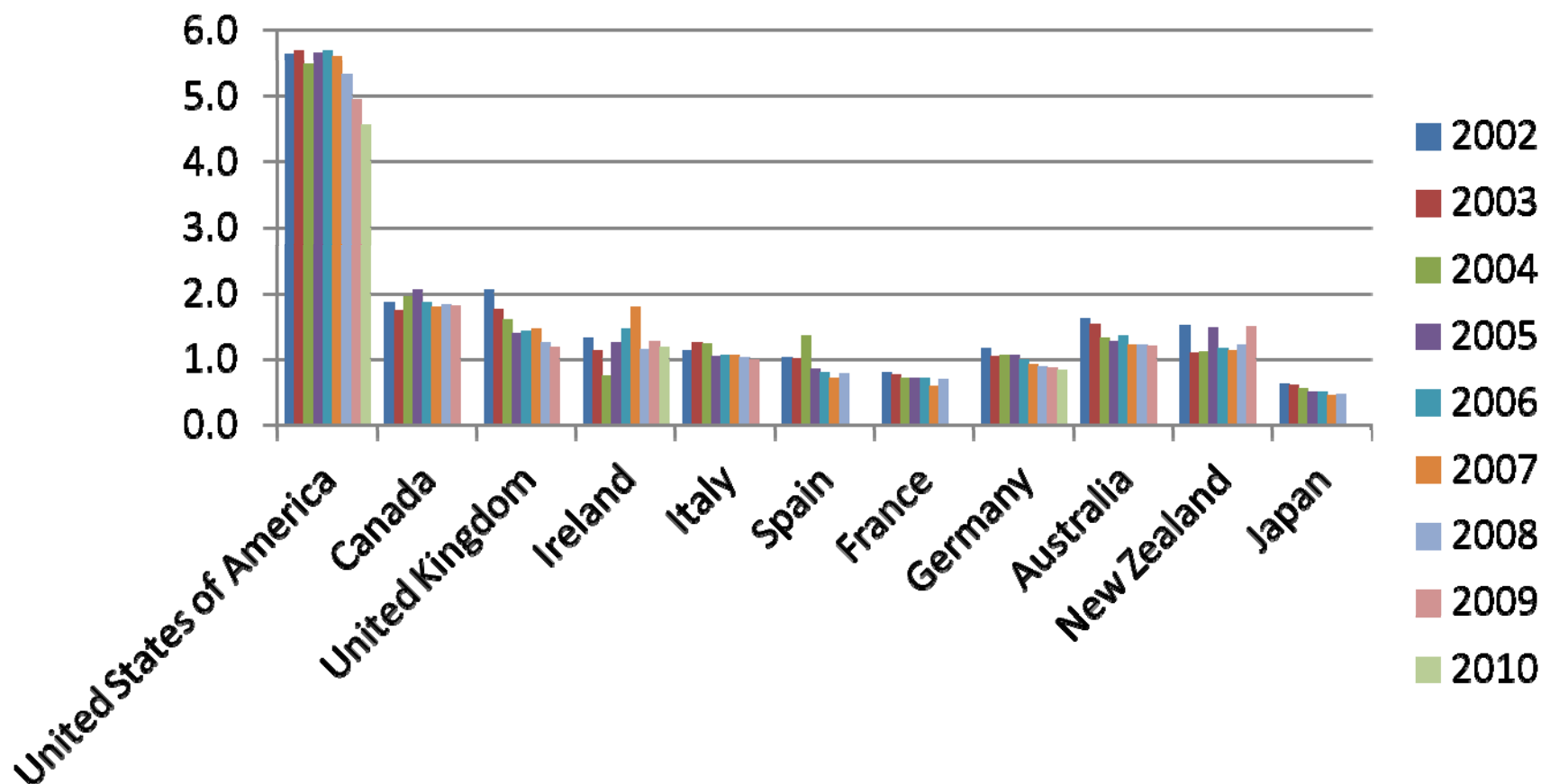
# The National Picture: PERF Survey Findings

- Overall **downward trend** in gun-related homicides, robberies, and aggravated assaults from 2008 – 2010.
- Each year, approximately **two-thirds (66%)** of all homicides were **gun-related**.

Violent Crime Rates/100,000 Across Three Year Period  
(median)

	2008	2009	2010	% Change ('08-'10)
<b>Total Homicides</b>	5	4	4	-20.0%
<b>Gun Homicides</b>	3	2	2	<b>-33.3%</b>
<b>Total Robberies</b>	143	134	121	-15.4%
<b>Gun Robberies</b>	50	45	38	<b>-24.0%</b>
<b>Total Aggravated Assaults</b>	268	264	257	-4.1%
<b>Gun Aggravated Assaults</b>	40	36	37	<b>-7.5%</b>

# Homicides per 100,000 population: U.S. vs. selected other industrialized nations (2002-2010)



Note: 2009-2010 data unavailable for some countries.

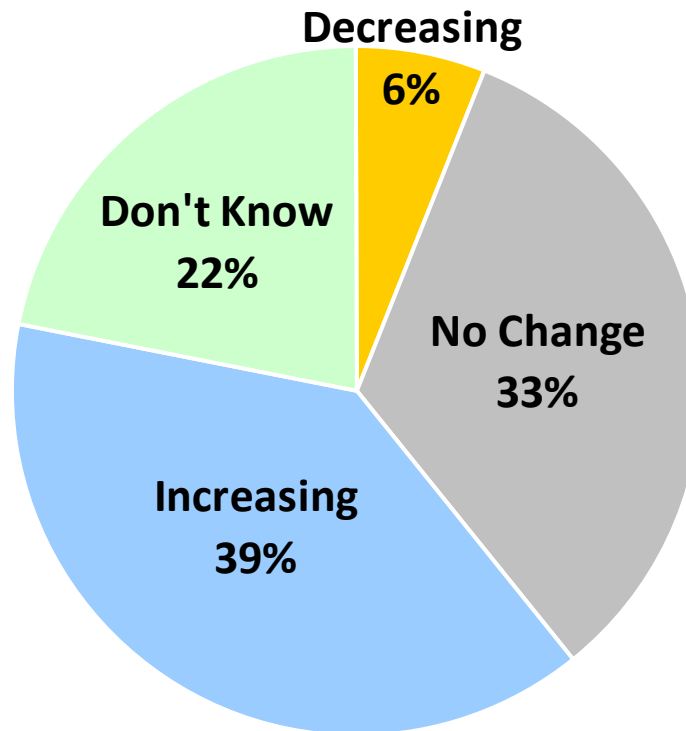
Source: United Nations Office on Drugs and Crime (<http://www.unodc.org/unodc/en/data-and-analysis/homicide.html>)

# The National Picture

## PERF Survey Findings: Youth Offenders

In your opinion, since 2005, what trends has your agency witnessed in the following:

### Gun crime by people <18 years old



•Responding agencies report that approximately 14% of all gun offenders are below age 18.

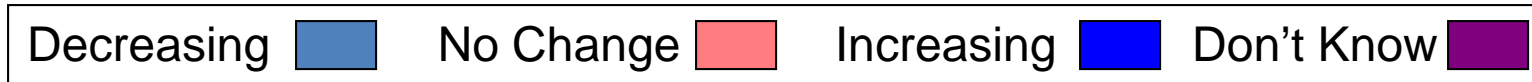
## The National Picture

### PERF Survey Findings: Gun Buybacks and Recoveries

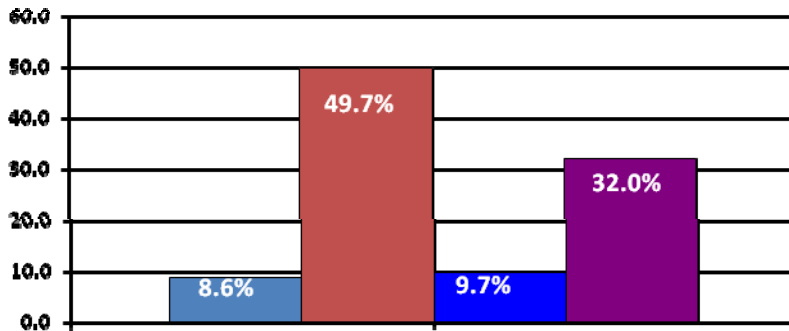
- Between 2008-2010 the average total number of guns recovered, and guns recovered through buyback programs decreased.
  - Total **recoveries decreased 13.2%**, from an average of 463.8 guns in 2008 (n=390) to 402.7 guns in 2010 (n=396)
  - Recoveries from buyback programs **decreased 13.9%**, from an average of 35.0 guns in 2008 (n=354) to 30.1 guns in 2010 (n=362).

# The National Picture: PERF Survey Gun Crime Trends

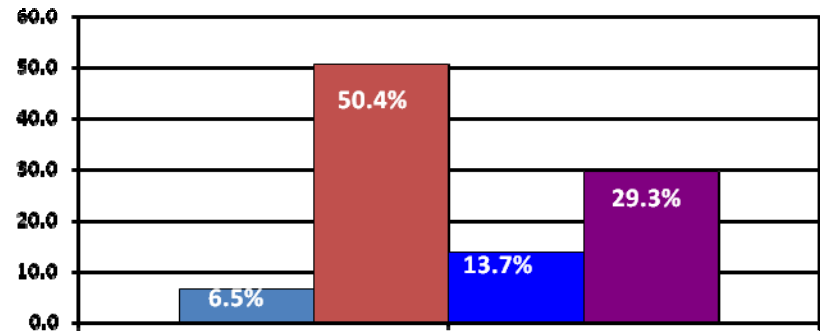
In your opinion, since 2005, what trends has your agency witnessed in the following illegal gun areas?



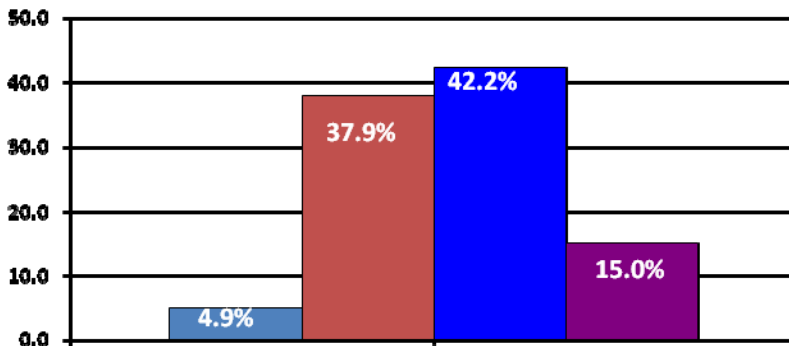
**Gun crime committed with previously banned assault rifles:**



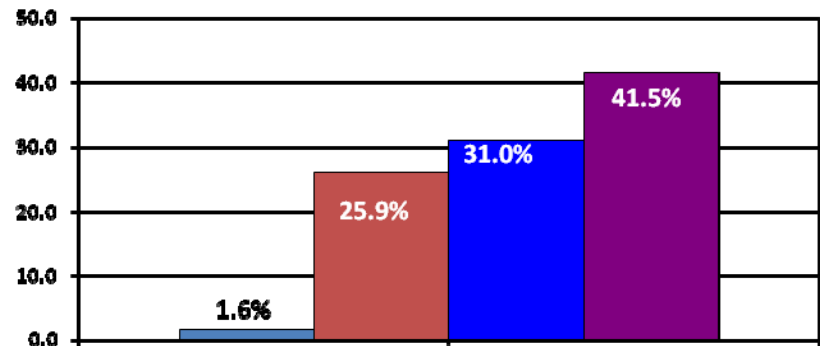
**Gun crime committed with high capacity magazines:**



**Gun thefts:**



**Street purchases of illegal guns:**



# The National Picture

## PERF Survey Findings

### Purchase trends by region:

- Regardless of region, **18%** of agencies said that high-capacity magazines purchases were increasing.
- Agencies from the Northeast were less likely to say that gun show purchases were increasing (**17%**) than the South or Midwest (**36%**).

### Concealed Carry:

#### **49% believed that concealed carry requests had increased since 2005**

- Those stating these requests were increasing by region-
  - 66% Midwest was most likely to say conceal carry requests had increased than...
  - South (49%);
  - Northeast (43%) or
  - West (32%)

# **Nature of Gun Violence**

***Zooming In: The Distinctive Nature of  
Gun Violence in Six Cities***

# Target Week: April 4-10, 2011

Annual overview and **detailed chronology** of a week of gun-related violence in:

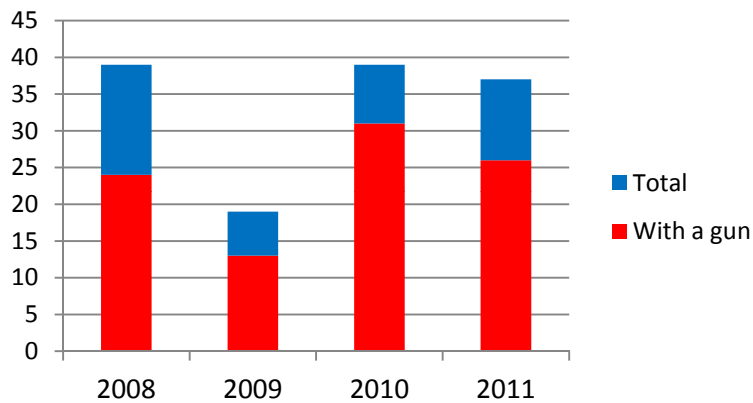
- Minneapolis, Minnesota
- Milwaukee, Wisconsin
- Austin, Texas
- San Diego, California
- Philadelphia, Pennsylvania
- Toronto, Ontario



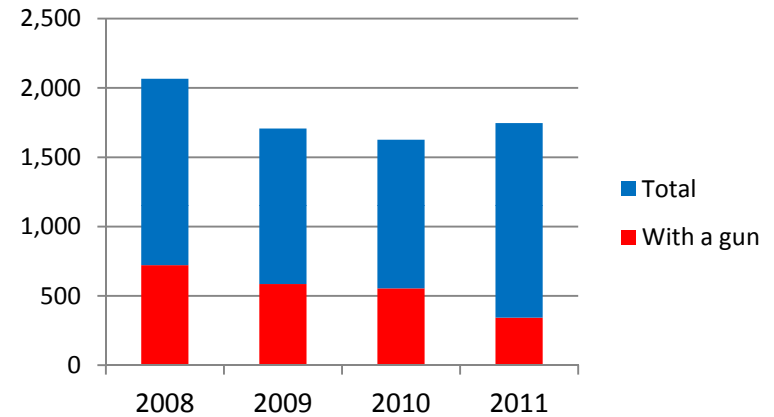
# Minneapolis: Incident Overview 2008-2011

Pop: 382,578

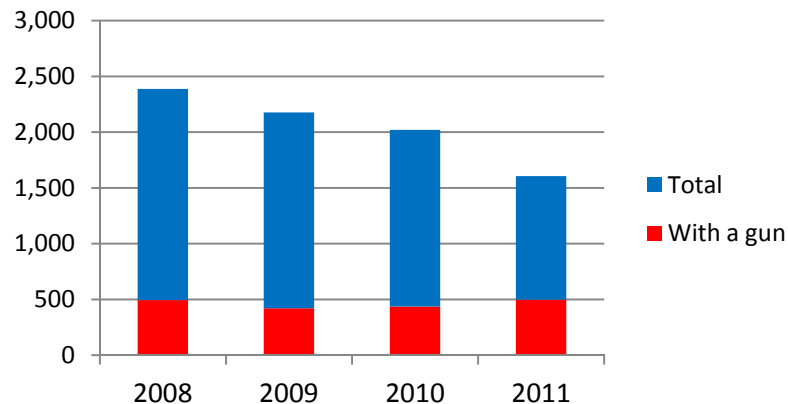
## Homicides



## Aggravated Assaults



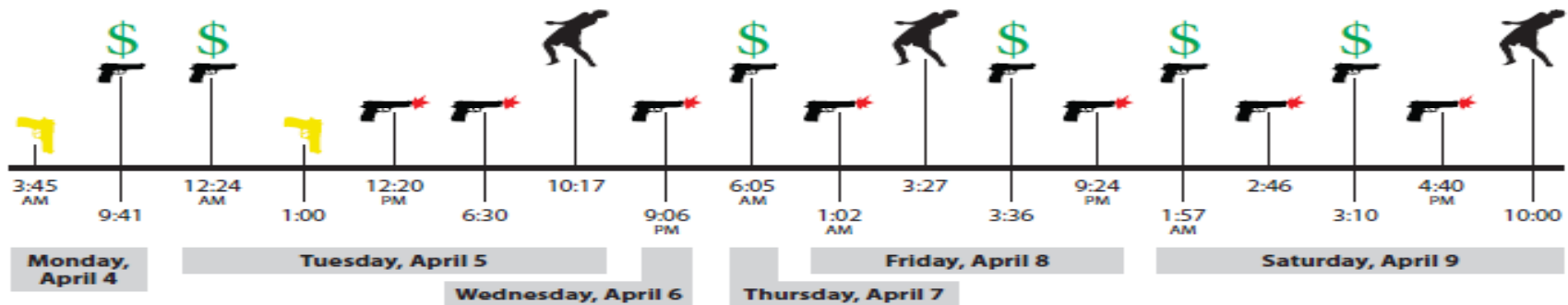
## Robberies








Type	2008	2009	2010	2011
<b>Homicide</b>	39	19	39	37
Firearm Related	24	13	31	26
<b>Aggravated Assault</b>	2,066	1,707	1,626	1,746
Firearm Related	722	586	555	343
<b>Robbery</b>	2,387	2,177	2,021	1,606
Firearm Related	494	421	436	499

# Minneapolis: Week of April 4-10, 2011

Pop: 382,578



## Week Totals

	Homicide with Firearm:	0
	Robbery with Firearm:	6
	Agg. Assault with Firearm:	7
	*People shot & wounded:	3
	Unlawful Possession:	2
	<b>Total Incidents:</b>	<b>18</b>

**Victims: 15**

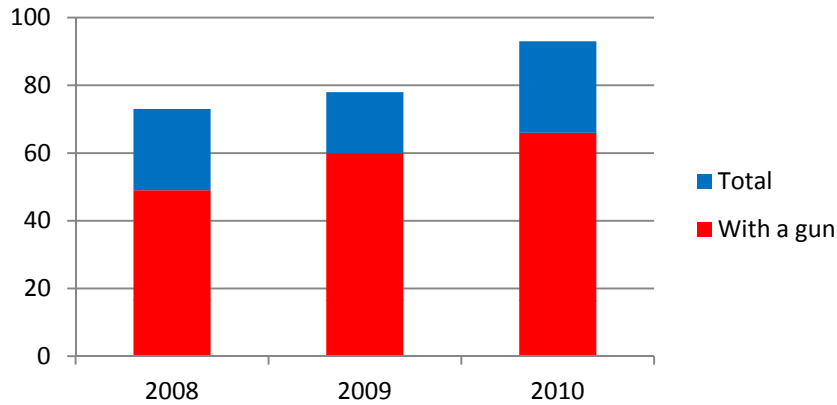
**Known Suspects: 21**

\*Shootings include robberies or aggravated assaults that result in actual gunshot wounds.  
 These are not included in other categories.

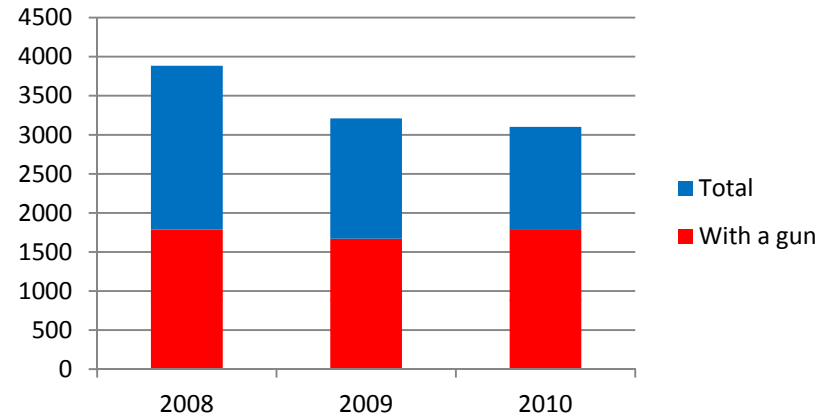
# Milwaukee: Incident Overview 2008-2011

Pop: 594,833

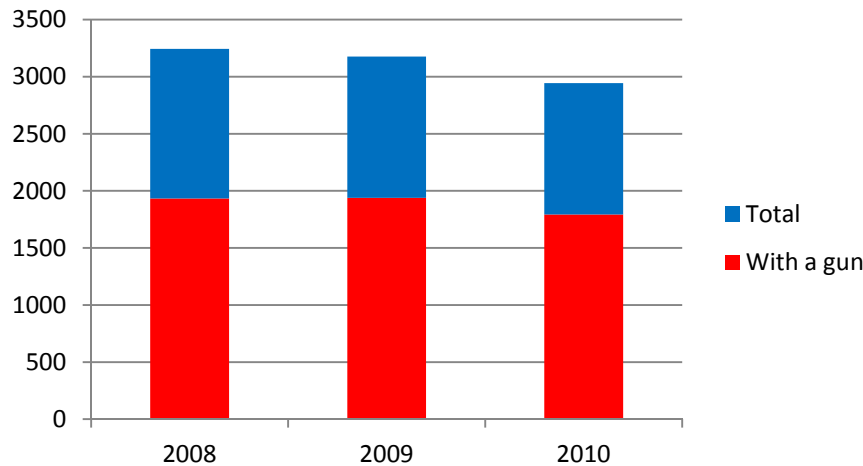
### Homicides



### Aggravated Assaults



### Robberies

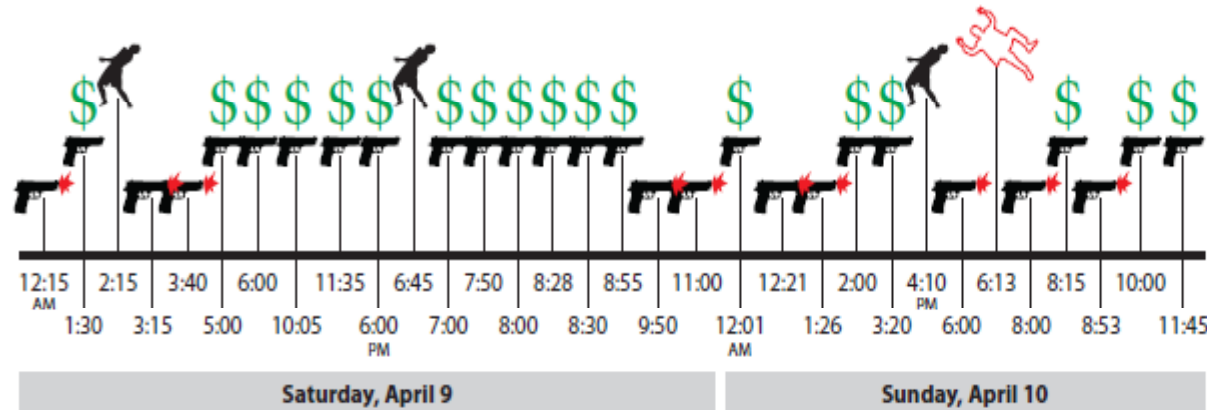
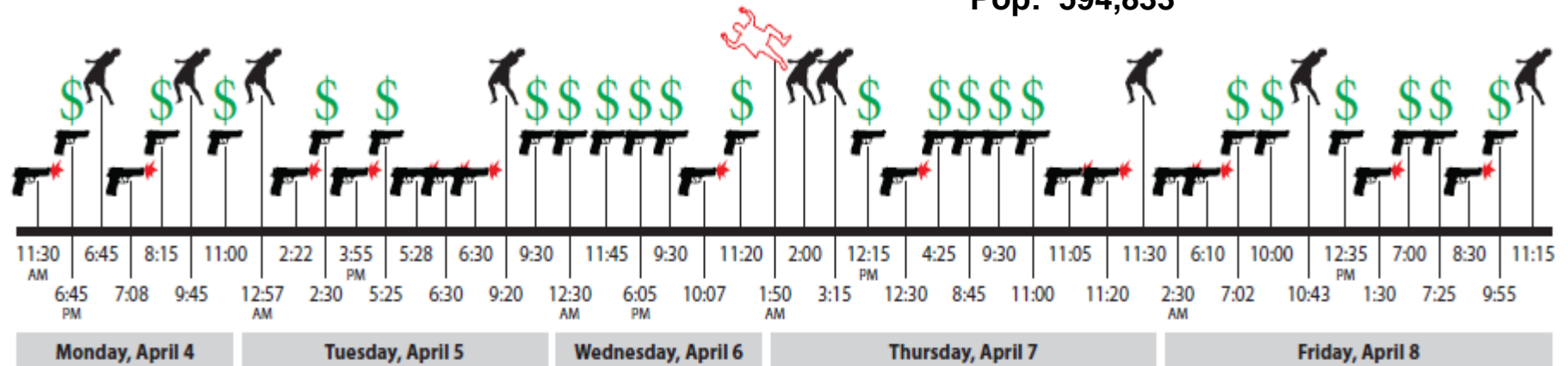


Type	2008	2009	2010
<b>Homicide</b>	71	72	95
Firearm Related	51	60	67
<b>Aggravated Assault</b>	3884	3209	3102
Firearm Related	1788	1669	1545
<b>Robbery</b>	3244	3177	2943
Firearm Related	1933	1939	1793

Milwaukee reports via NIBRS. The provided data was converted from NIBRS to UCR summary data by the FBI.

# Milwaukee: Week of April 4–10, 2011

Pop: 594,833



Key



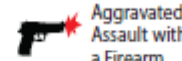
Unlawful Possession



Armed Robbery



Gunshot Wound



Aggravated Assault with a Firearm



Homicide with Firearms







POLICE EXECUTIVE RESEARCH FORUM

# Milwaukee: Week of April 4-10, 2011

Pop: 594,833

## Week Totals

	<u>Homicide with firearm:</u>	<u>2</u>
	<u>Robbery with firearm:</u>	<u>40</u>
	<u>Agg. Assault with firearm</u>	<u>25</u>
	<u>*People shot &amp; wounded:</u>	<u>12</u>
	<b>Total Incidents:</b>	<b>79</b>

**Victims: 108**

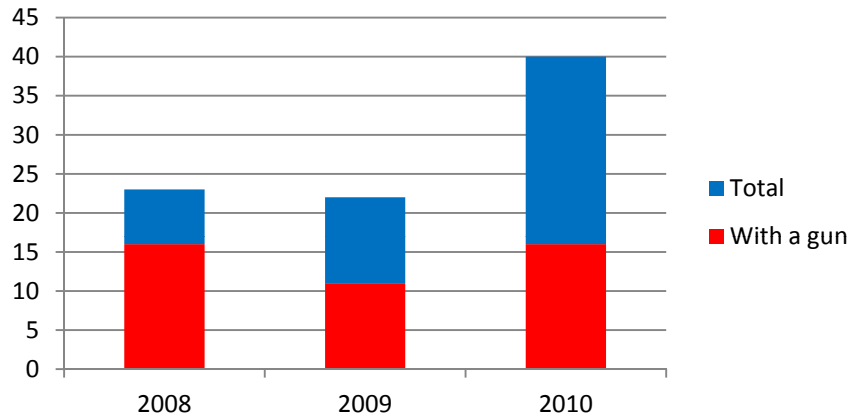
**Known Suspects: 49**

\*Shootings include robberies or aggravated assaults that result in actual gunshot wounds. These are not included in other categories.

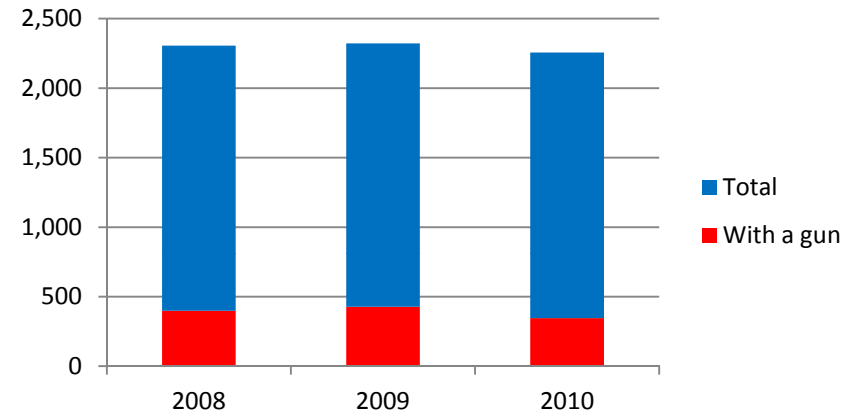
# Austin: Overview 2008-2012

Pop: 790,390

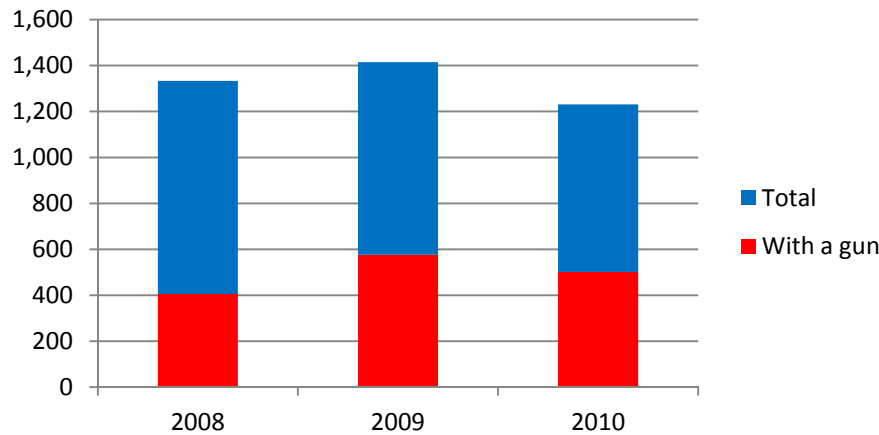
## Homicides



## Aggravated Assaults



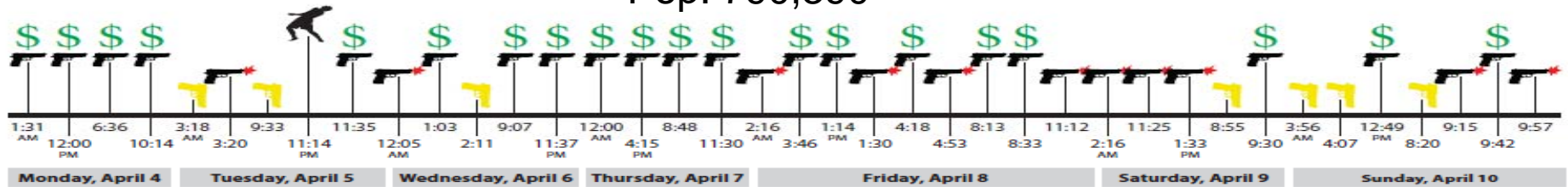
## Robberies








Type	2008	2009	2010
<b>Homicide</b>	23	22	40
Firearm Related	16	11	16
<b>Aggravated Assault</b>	2,306	2,322	2,256
Firearm Related	399	427	346
<b>Robbery</b>	1,333	1,415	1,231
Firearm Related	406	576	502

# Austin: April 4-10, 2011

Pop: 790,390



## Week Totals

	<u>Homicide with Firearm:</u>	<u>0</u>
	<u>Robbery with Firearm:</u>	<u>20</u>
	<u>Agg. Assault with Firearm</u>	<u>11</u>
	<u>*People shot &amp; wounded:</u>	<u>1</u>
	<u>Unlawful Possession:</u>	<u>7</u>
	<b>Total Incidents:</b>	<b>39</b>

**Victims: 53**

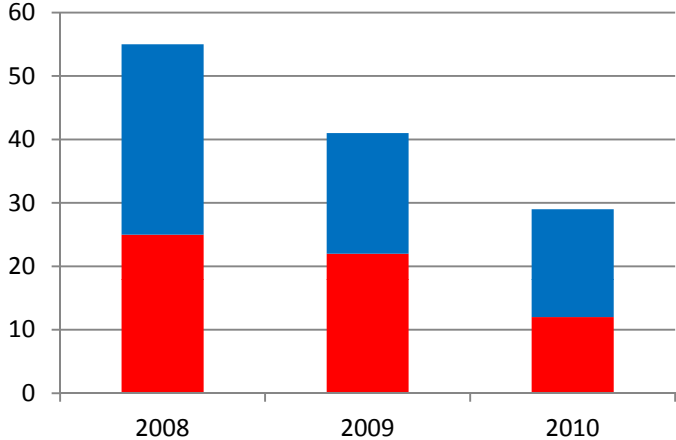
**Known Suspects: 32**

\*Shootings include robberies or aggravated assaults that result in actual gunshot wounds. These are not included in other categories.

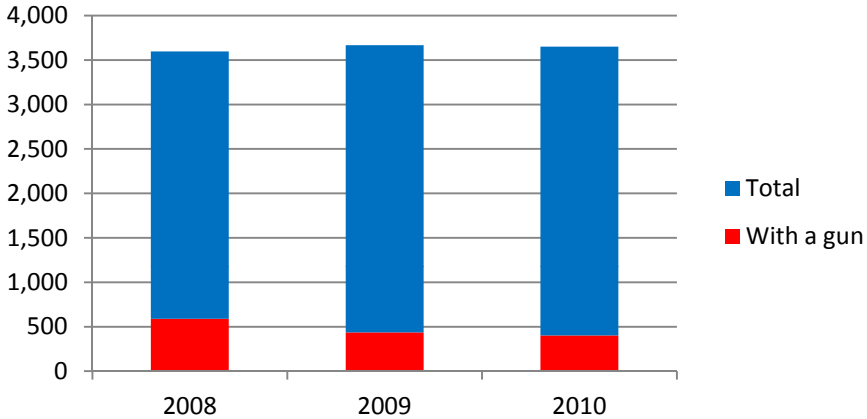
# San Diego: Overview 2008-2010

Pop: 1.3M

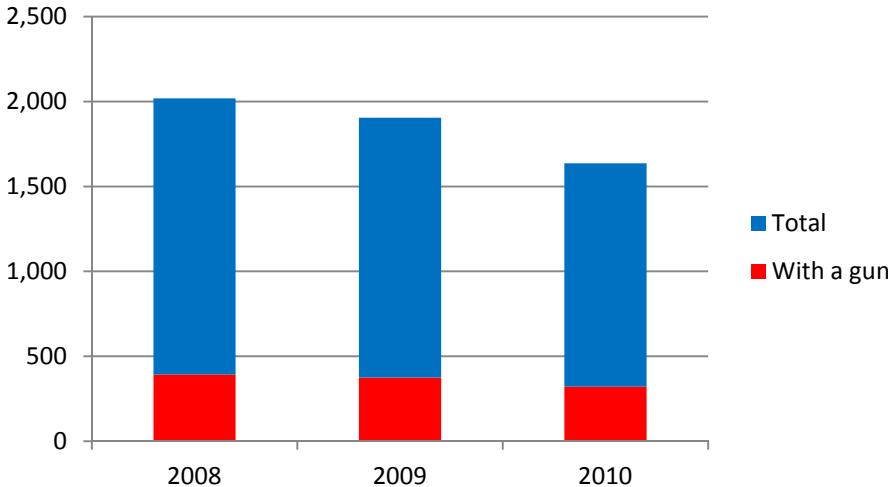
### Homicides



### Aggravated Assaults



### Robberies

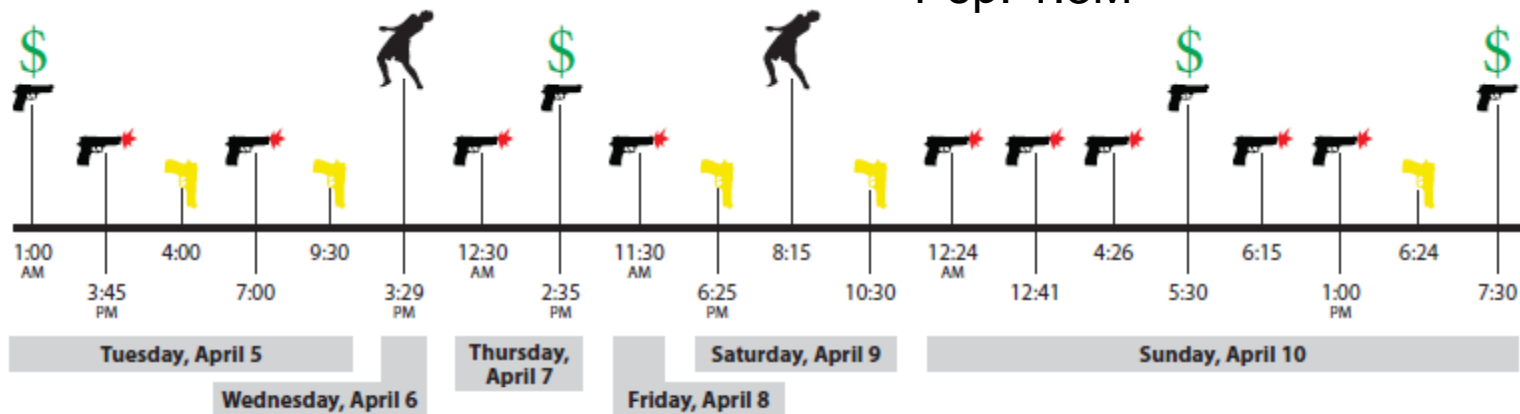


Type	2008	2009	2010
<b>Homicide</b>	55	41	29
Firearm Related	25	22	12
<b>Aggravated Assault</b>	3,597	3,667	3,651
Firearm Related	589	437	402
<b>Robbery</b>	2,019	1,905	1,636
Firearm Related	393	375	321







# San Diego: Week of April 4-10, 2011

Pop: 1.3M



## Week Totals

	Homicide with Firearm:	0
	Robbery with Firearm:	4
	Agg. Assault with Firearm	9
	*People shot & wounded:	2
	Unlawful Possession:	5
	<b>Total Incidents:</b>	<b>20</b>

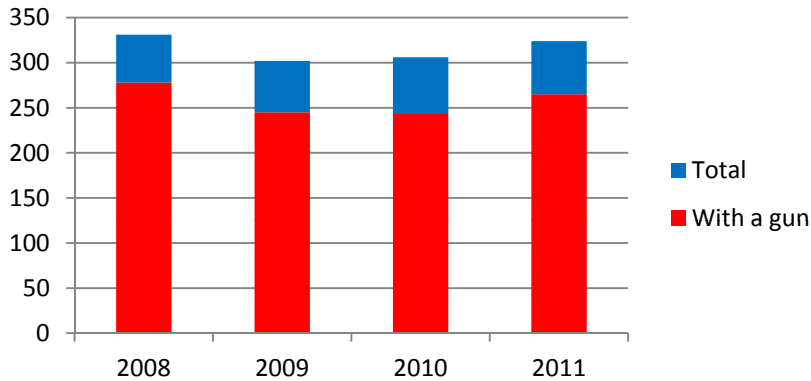
**Victims: 12; Known Suspects: 10**

\*Shootings include robberies or aggravated assaults that result in actual gunshot wounds. These are not included in other categories.

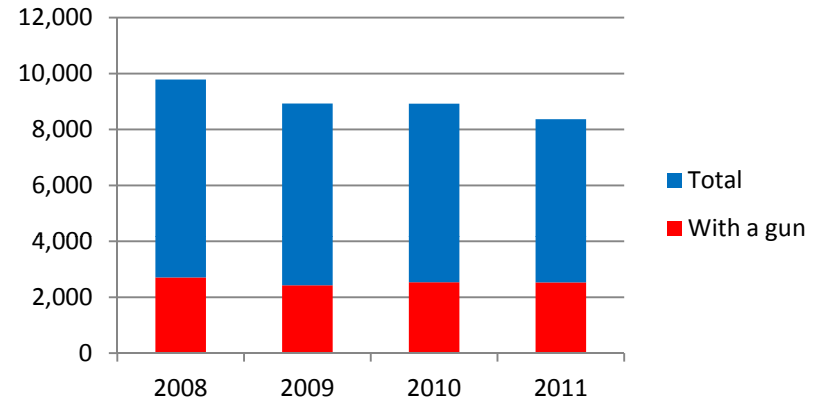
# Philadelphia: Incident Overview 2008-2010

Pop: 1.526 M

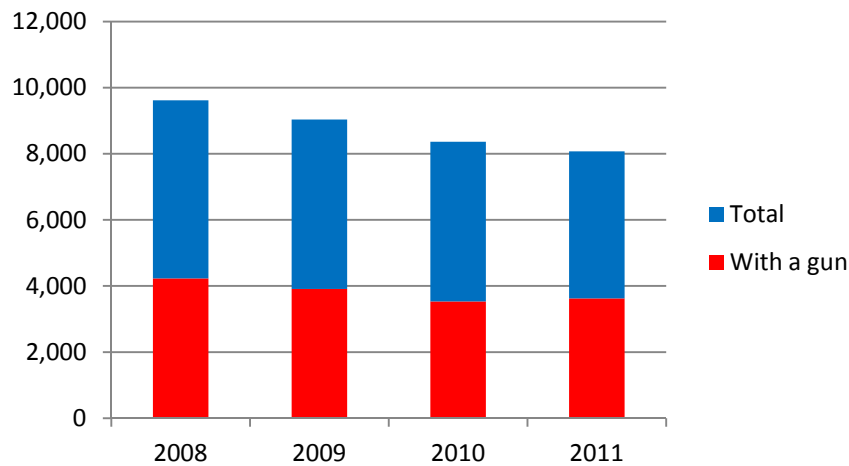
## Homicides



## Aggravated Assaults

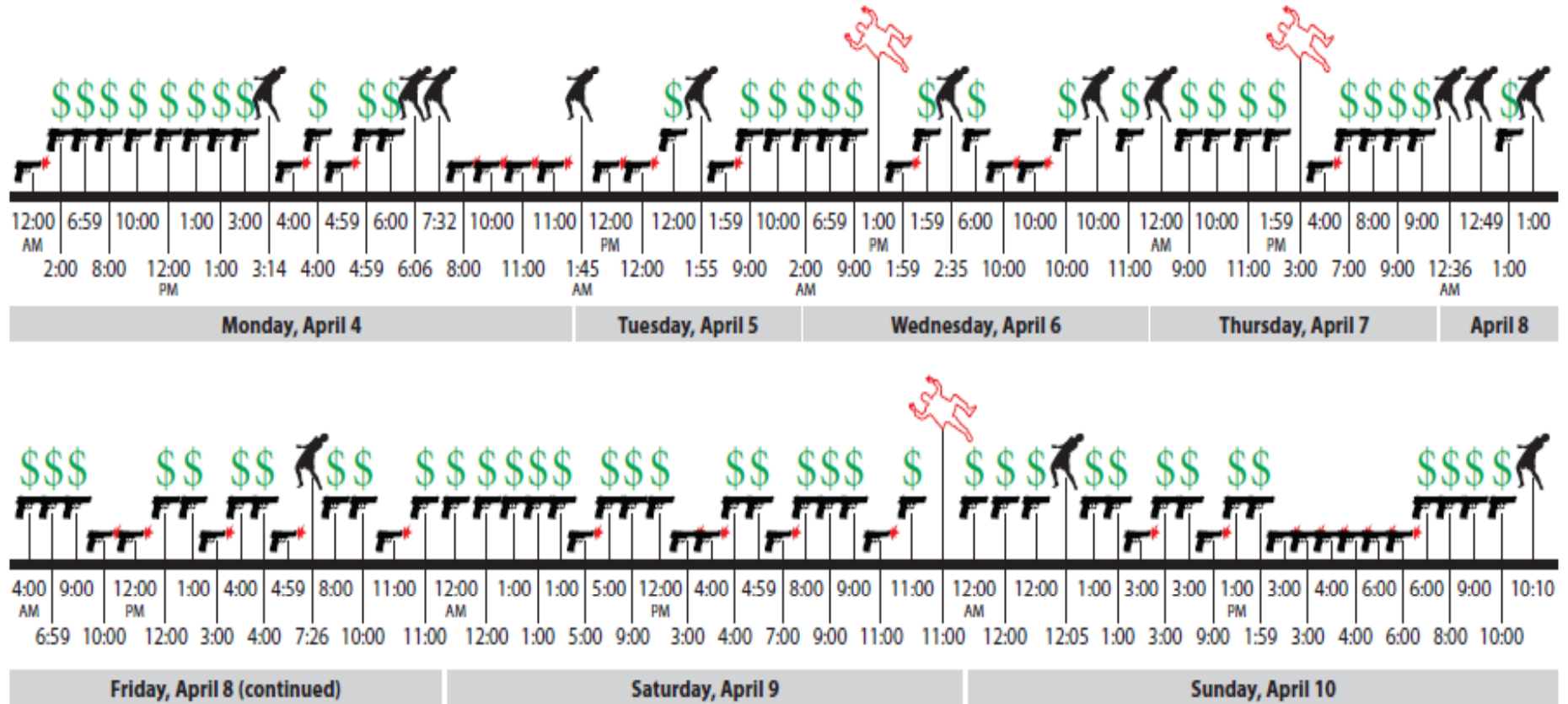


## Robberies



Type	2008	2009	2010	2011
<b>Homicide</b>	331	302	306	324
Firearm Related	278	245	244	265
<b>Aggravated Assault</b>	9,784	8,928	8,921	8,368
Firearm Related	2,709	2,431	2,538	2,529
<b>Robbery</b>	9,618	9,037	8,363	8,072
Firearm Related	4,230	3,908	3,535	3,623

# Philadelphia: Week of April 4–10, 2011



Key



Armed Robbery



Gunshot Wound



Aggravated Assault with a Firearm



Homicide with Firearms



POLICE EXECUTIVE RESEARCH FORUM

# Philadelphia: Week of April 4-10, 2011

Pop: 1.526M

## Week Totals



Homicide with Firearm: 3



Robbery with Firearm: 68



Agg. Assault with Firearm 31



\*People shot & wounded: 14



Unlawful possession 28



**Total Incidents:** 144

**Victims: 120**

**Known Suspects: 49**

\*Shootings include robberies or aggravated assaults that result in actual gunshot wounds. These are not included in other categories.

# Court Outcomes (to date) for Gun Crimes in Philadelphia during Target Week

**3 Homicides**

**3 Suspects awaiting trial**

**72 Armed Robberies**

**6 Suspects found guilty**

3 received prison sentences (1,1.5, 2.5 yrs.); 3 awaiting sentencing

**8 Cases withdrawn**

**9 cases still open/active**

**31 Aggravated Assaults**

**5 Suspects found guilty**

2 received prison sentences (1 & 2 yrs.); 3 received probation

**1 Suspect found not guilty**

**8 Cases withdrawn**

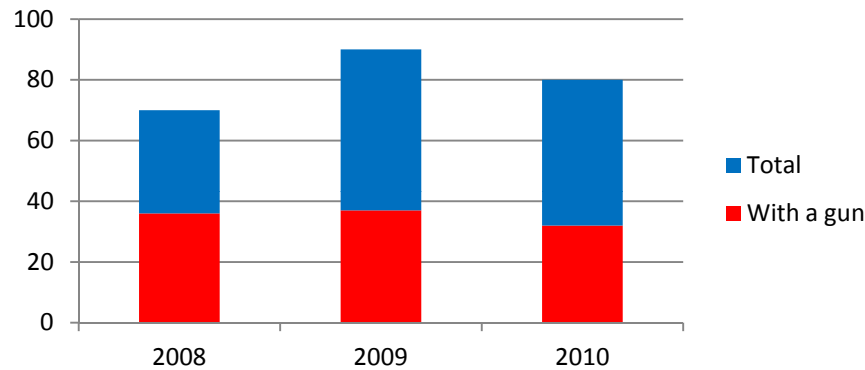
**7 cases still open/active**

**CASE STATUS WAS FOUND FOR 47 of 49 DEFENDANTS FROM  
106 VIOLENT FIREARMS INCIDENTS DURING THE WEEK**

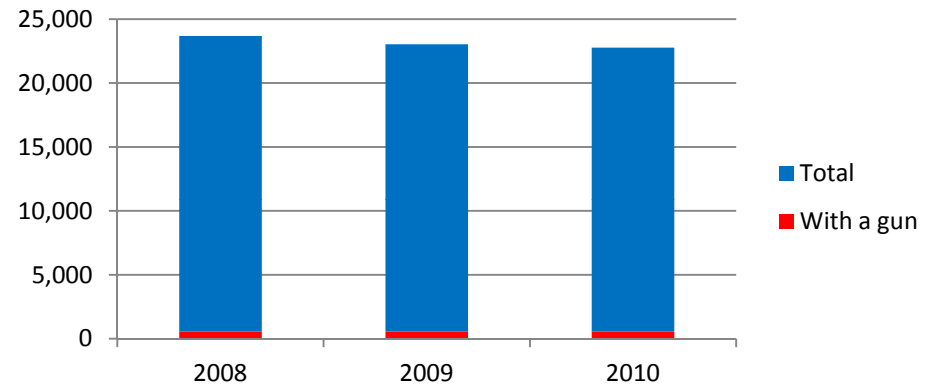
# Toronto: Overview 2008-2010

Pop: 2.615M

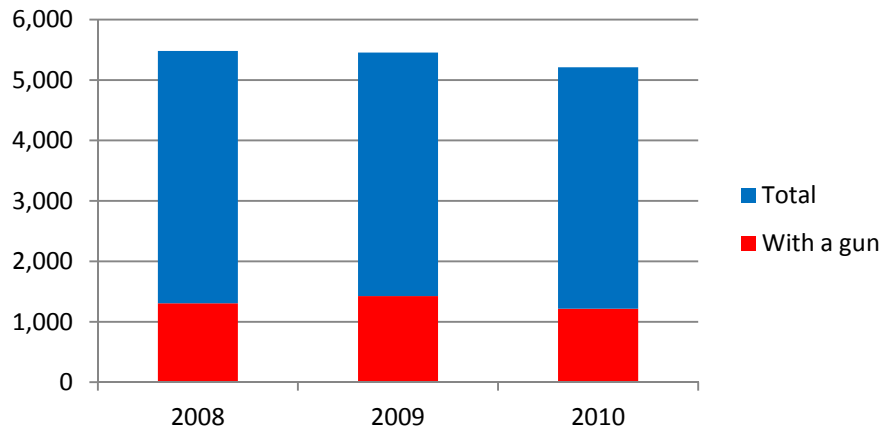
## Homicides



## Aggravated Assaults

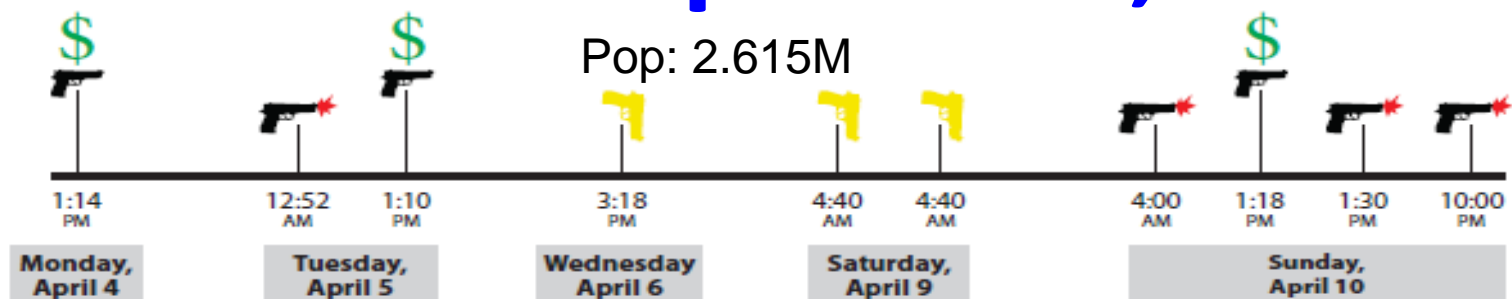


## Robberies









Type	2008	2009	2010
<b>Homicide</b>	70	90	80
Firearm Related	36	37	32
<b>Aggravated Assault</b>	23,677	23,029	22,768
Firearm Related	550	551	552
<b>Robbery</b>	5,480	5,455	5,210
Firearm Related	1,307	1,426	1,215

# Toronto: April 4-10, 2011



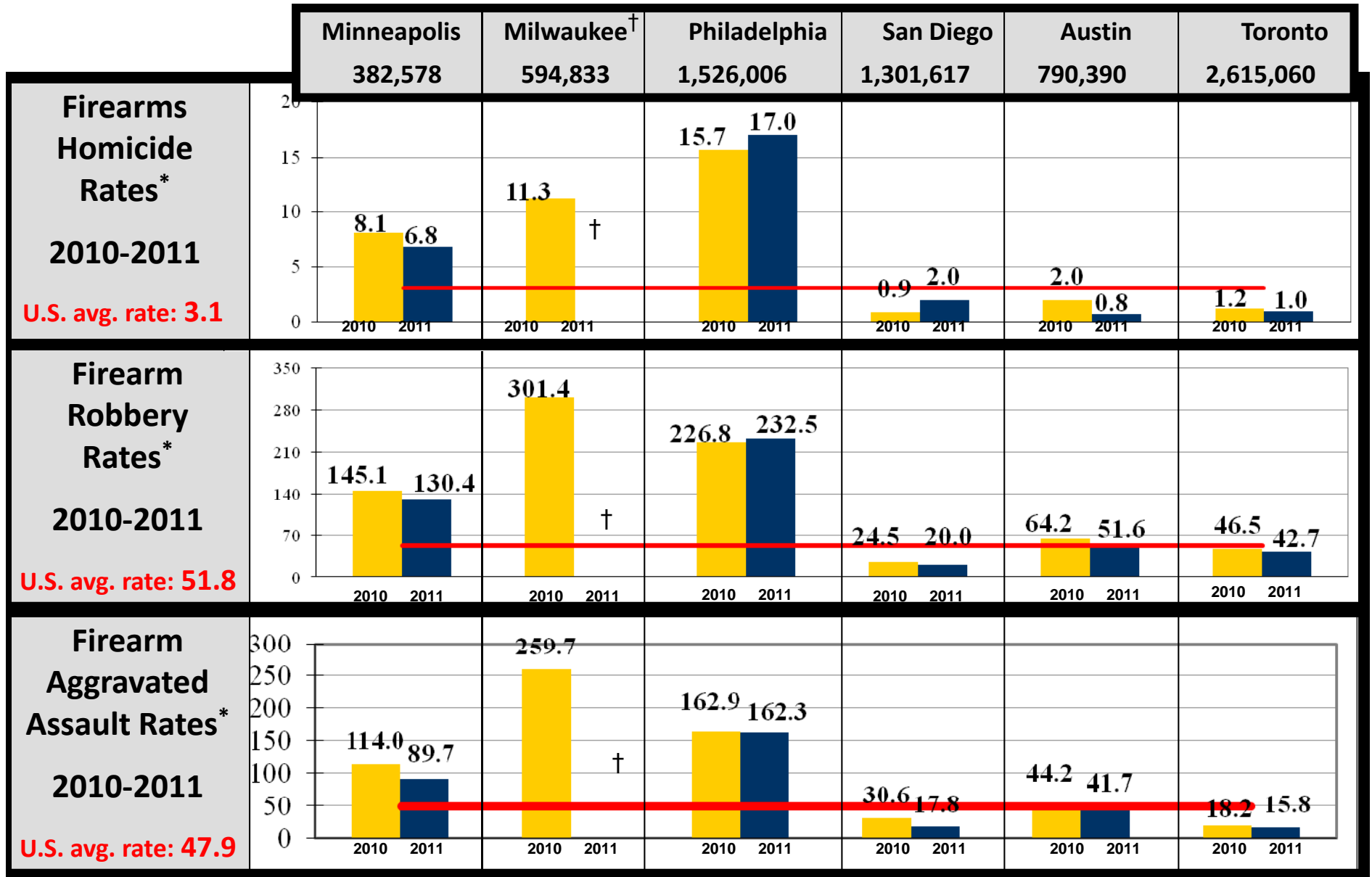
## Week Totals

	Homicide with Firearm:	0
	Robbery with Firearm:	3
	Agg. Assault with Firearm	4
	*People shot & wounded:	0
	Unlawful Possession:	3
		
	<b>Total Incidents:</b>	<b>10</b>

**Victims: 9 Known Suspects: 11**

\*Shootings include robberies or aggravated assaults that result in actual gunshot wounds. These **are not** included in other categories.

# Gun Crime Rates: Selected Sites 2010-2011

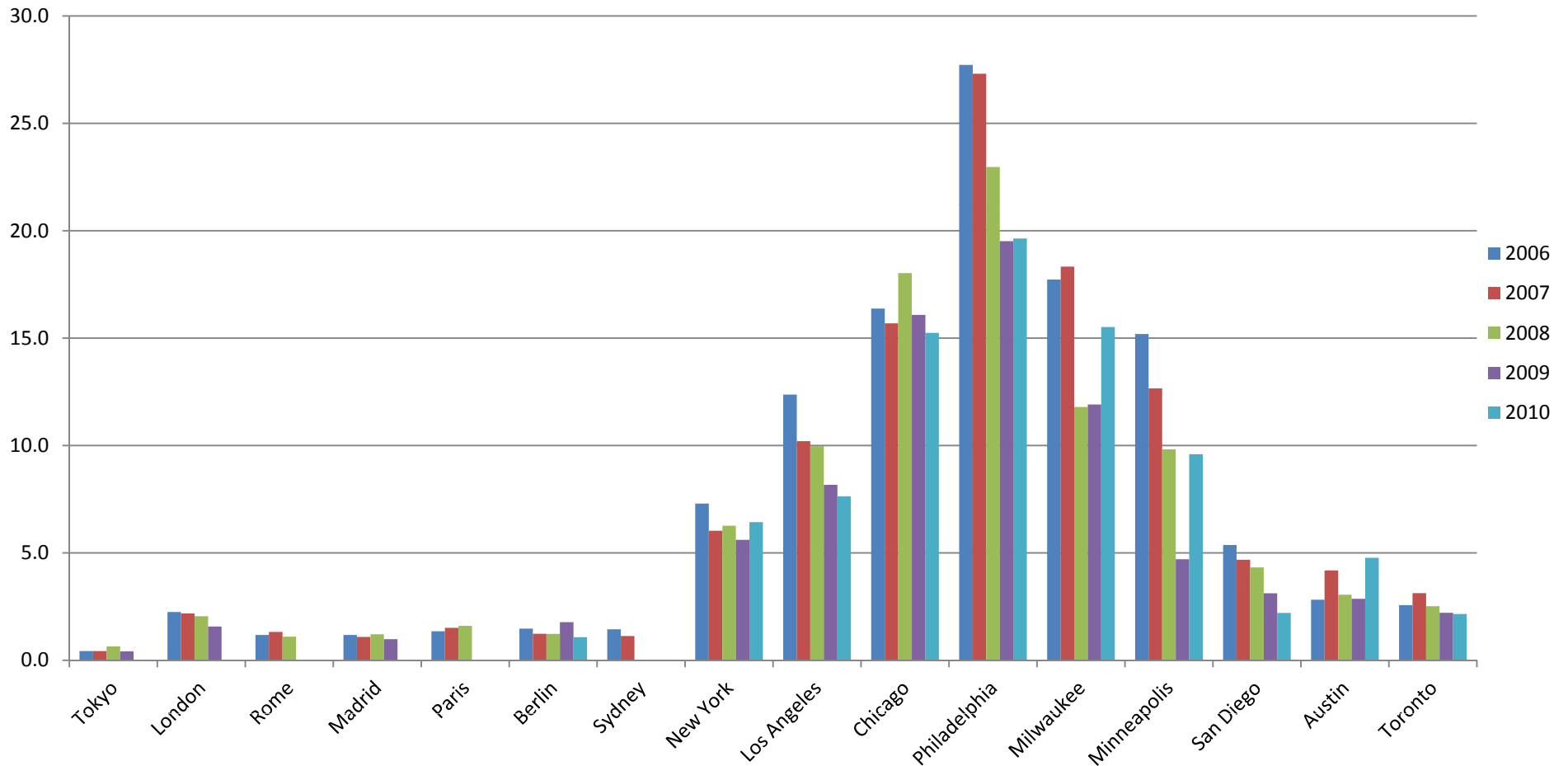


† Milwaukee rates are from NIBRS converted to UCR. These numbers are not yet available for 2011

\* Rates per 100,000



# Homicides per 100,000 population: Cities studied vs. other major US and international cities (2006-2010)



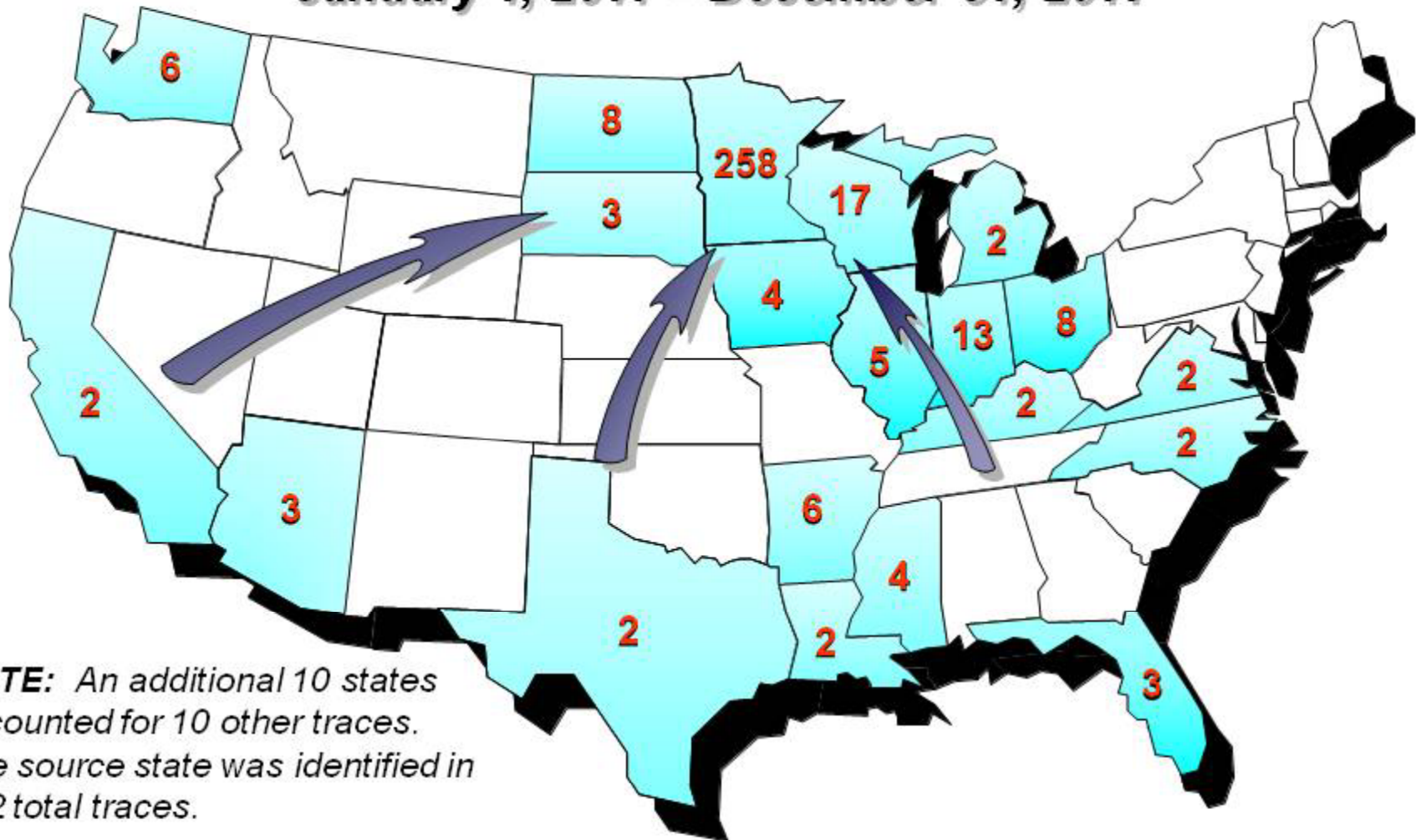
Source: United Nations Office on Drugs and Crime (<http://www.unodc.org/unodc/en/data-and-analysis/homicide.html>); UCR Summary Data Reports

**Where are the Guns Coming From?**

***Firearms Tracing and Identifying  
Sources of Crime Guns***

# Top 15 **Source** States for Firearms with a Minneapolis, Minnesota Recovery

January 1, 2011 – December 31, 2011



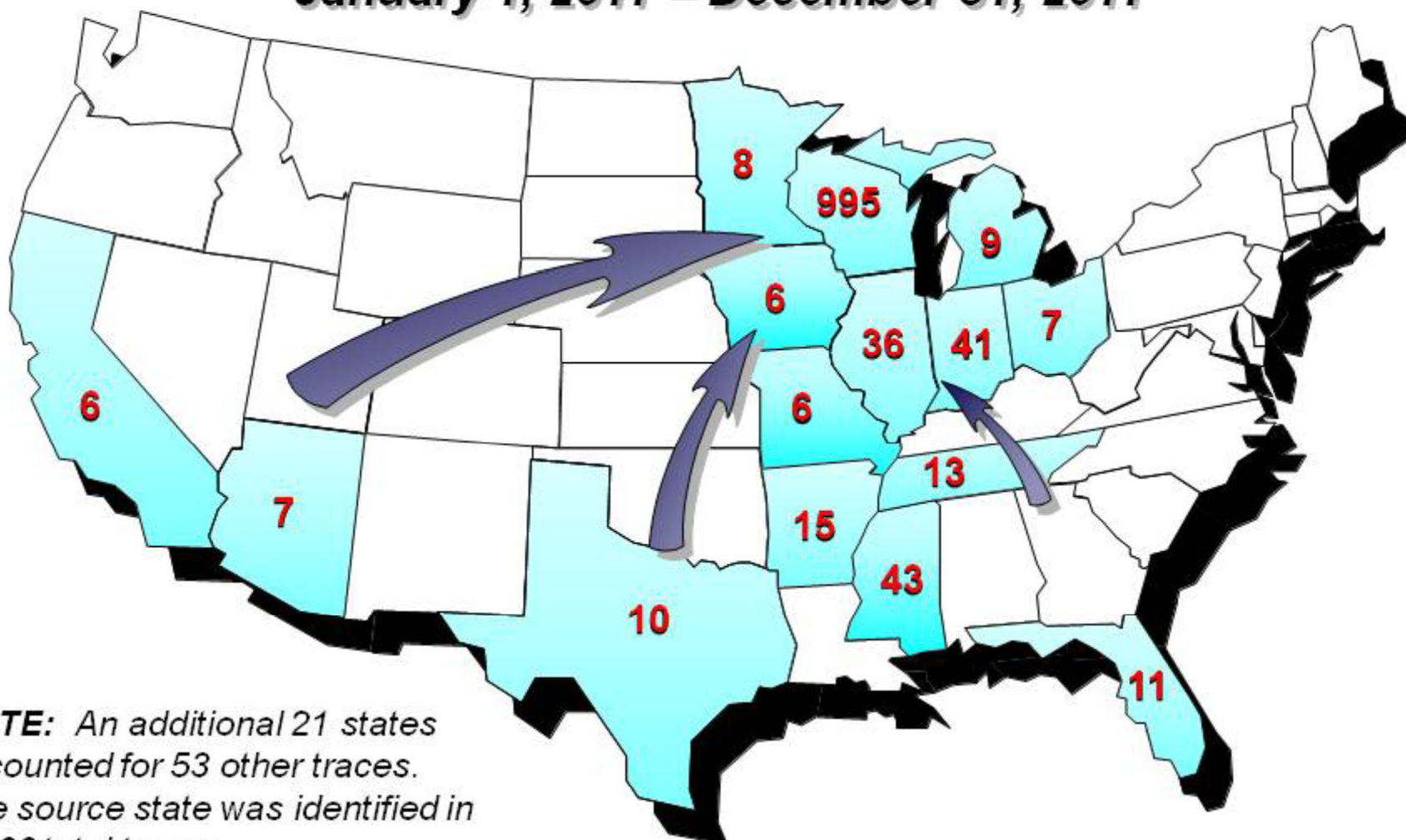
**NOTE:** An additional 10 states accounted for 10 other traces. The source state was identified in 362 total traces.

\* There were six states tied with two traces each.

Bureau of Alcohol, Tobacco, Firearms and Explosives, Office of Strategic Intelligence and Information

# Top 15 **Source** States for Firearms with a Milwaukee, Wisconsin Recovery

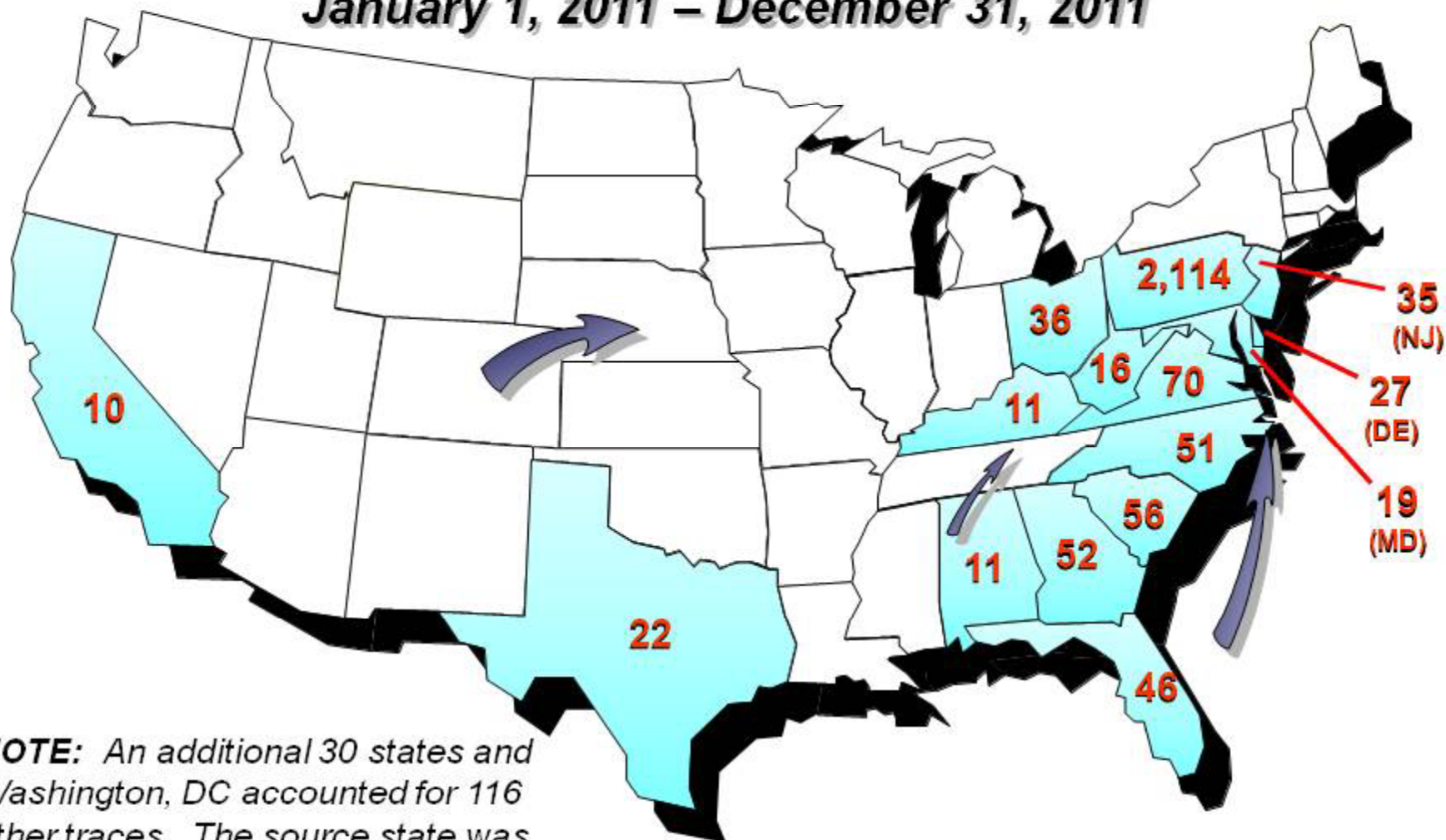
January 1, 2011 – December 31, 2011



**NOTE:** An additional 21 states accounted for 53 other traces. The source state was identified in 1,266 total traces.

# Top 15 **Source** States for Firearms with a Philadelphia, Pennsylvania Recovery

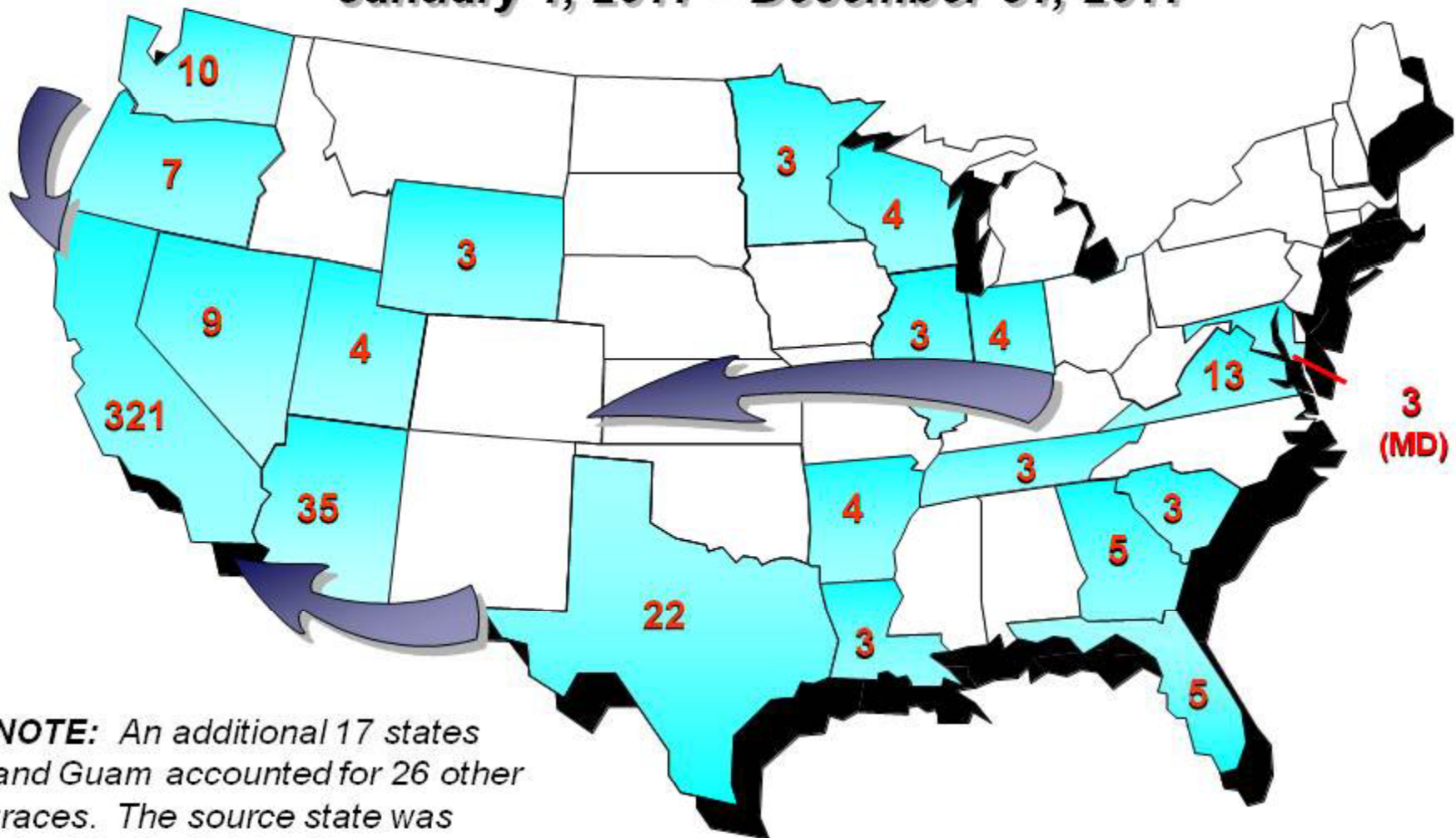
January 1, 2011 – December 31, 2011



**NOTE:** An additional 30 states and Washington, DC accounted for 116 other traces. The source state was identified in 2,692 total traces.

# Top 15 **Source** States for Firearms with a San Diego, California Recovery

January 1, 2011 – December 31, 2011

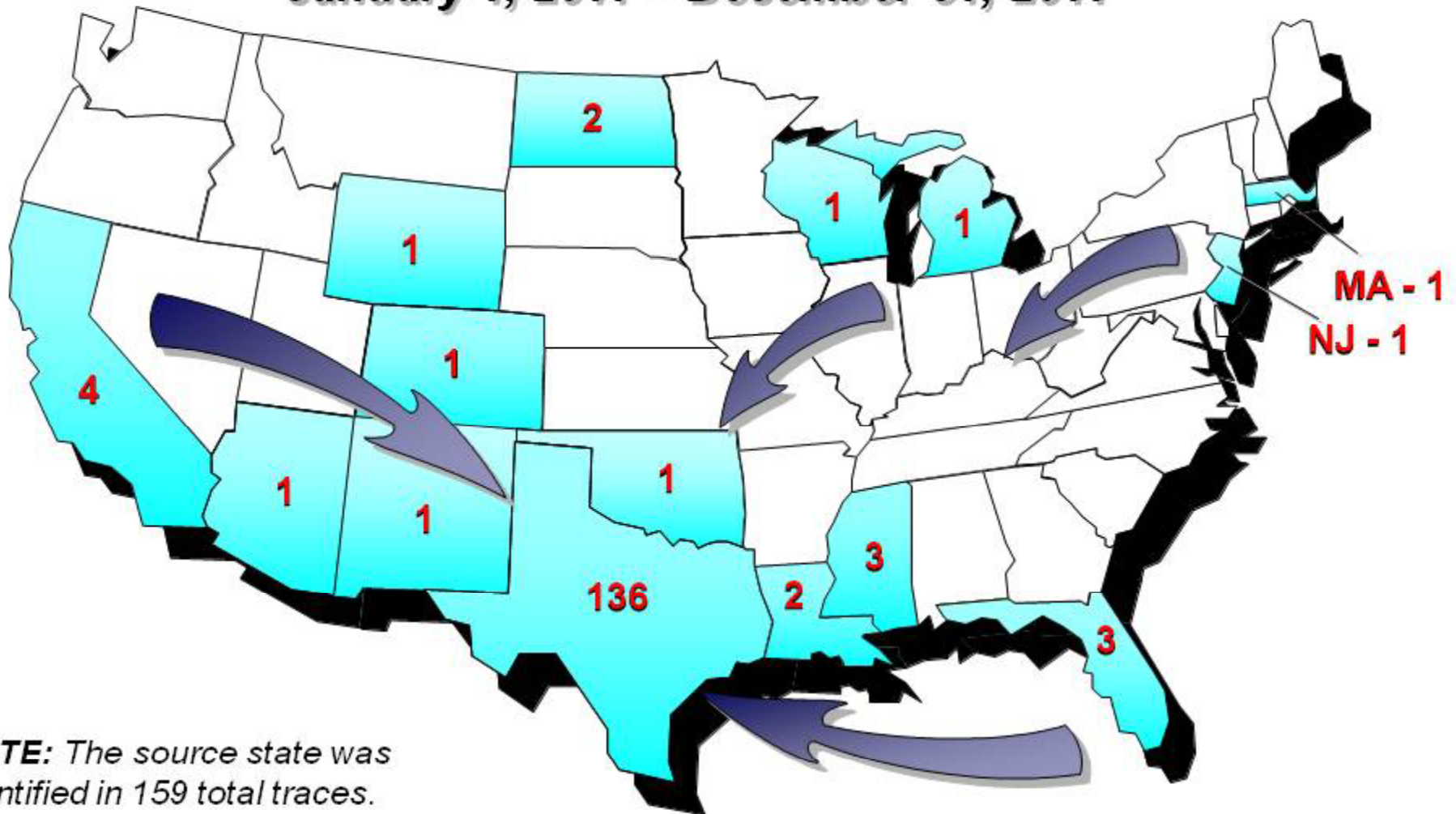


**NOTE:** An additional 17 states and Guam accounted for 26 other traces. The source state was identified in 490 total traces.

\* There were seven states tied with three traces each.

# Top 15 **Source** States for Firearms with an Austin, Texas Recovery

January 1, 2011 – December 31, 2011



**NOTE:** The source state was identified in 159 total traces.

# Guns Recovered and Traced

## April 4-10, 2011

	Minneapolis	Milwaukee	Philadelphia	San Diego	Austin
<b>Guns Traced</b>	8	46	71	8	1
<b>Percent Purchased in state</b>	75%	63%	79%*	88%	100%
<b>Average Time to Crime (years)</b>	7.5	13.5	12.4	14.2	25.9

- The **most common recovery state** for guns is the state **in which it was purchased**.
- **Time to Crime** is the period of time between the **first retail sale** of a firearm, and the **recovery of the weapon** after use (or suspected use) in a crime.
- The **average time to crime for all guns traced in 2010 is 10.99 Years (ATF)**.

\* Philadelphia data is percent of in-state guns recovered by any agency in Philadelphia in 2011 and traced (ATF)



# ATF Firearms Tracing and NIBIN

- **Trace results** summarize the lawful commerce trail of a single firearm until purchased by a non-licensed individual or entity
  - Information includes firearm description, purchaser, possessor, associates, time to crime, recovery address, and FFL distribution path
- National Integrated Ballistic Information Network (**NIBIN**)
  - Uses Integrated Ballistic Identification Systems (IBIS) to **acquire digital images of markings** on fired ammunition that can be compared against earlier NIBIN entries

# **What are the Costs of Gun Violence?**

*The costs associated with gun  
violence occurring during  
April 4-10, 2011*

# The Cost of Gun Violence

- The RAND Study\* (2010) provides the most recent cost-of-crime estimates, averaged from 3 high-quality studies using different methodology.
- The most conservative estimates used by RAND were produced by Cohen & Piquero (2009) who estimate the cost per crime at:

Murder	\$5 million
Armed Robbery	\$50,000
Aggravated Assault	\$55,000
Unlawful Possession <sup>†</sup>	\$500

<sup>†</sup> A \$500 value was assigned to “other” gun-related crimes.

- These estimates include:
  - **Victim Costs** (lost productivity; medical care; social services; property loss; and a “quality of life” estimate)
  - **Criminal Justice Costs** (Costs per offender of each stage of the process, including police costs, prosecutor costs, court costs, and costs of prison, jail, and probation and parole agencies)
  - **Offender Costs** (medical care, costs borne by offenders’ families, and loss of any legitimate earnings of offenders prior to incarceration)

\* [http://www.rand.org/pubs/occasional\\_papers/OP279.html](http://www.rand.org/pubs/occasional_papers/OP279.html)

# Cost of Crime in Minneapolis

## April 4-10, 2011

Aggravated Assaults	10 x \$55,000	= \$550,000
Armed Robberies	6 x \$50,000	= \$300,000
Unlawful Possessions	2 x \$500	= \$1,000
<b>Total Cost of Gun Crime for One Week:</b>		<b>\$851,000</b>

# Cost of Crime in Milwaukee

## April 4-10, 2011

Homicides                      2 x \$5,000,000 =    \$10,000,000

Aggravated Assaults    33 x \$55,000    =    \$1,815,000

Armed Robberies        44 x \$50,000    =    \$2,200,000

---

**Total Cost of Gun Crime for Week:            \$14,015,000**

# Cost of Crime in Philadelphia

## April 4-10, 2011

Homicides	3 x \$5,000,000	= \$15,000,000
Aggravated Assaults	41 x \$55,000	= \$ 2,255,000
Armed Robberies	72 x \$50,000	= \$ 3,600,000
Unlawful Possession	28 x \$500	= \$ 14,000

---

**Total Cost of Gun Crime for Week: \$20,869,000**

During the target week, one aggravated assault victim was shot 16 times. This individual is now in a wheelchair as a result of his injuries. *According to the National Spinal Cord Injury Statistical Center, the average lifetime cost of a spinal cord injury for someone with limited paralysis is approximately \$1,461,255.*

# Cost of Crime in San Diego

## April 4-10, 2011

Aggravated Assaults 11 x \$55,000 = \$605,000

Armed Robberies 4 x \$50,000 = \$200,000

Unlawful Possessions 5 x \$500 = \$2,500

---

**Total Cost of Gun Crime for Week: \$807,500**

# Cost of Crime in Austin

## April 4-10, 2011

Aggravated Assaults    11 x \$55,000    =    \$605,000

Armed Robberies        21 x \$50,000    =    \$1,050,000

Unlawful Possessions    7 x \$500        =        \$3,500

---

**Total Cost of Gun Crime for Week:        \$1,658,500**



# Cost of Crime in Toronto

## April 4-10, 2011

Aggravated Assaults 4 x \$55,000 = \$220,000

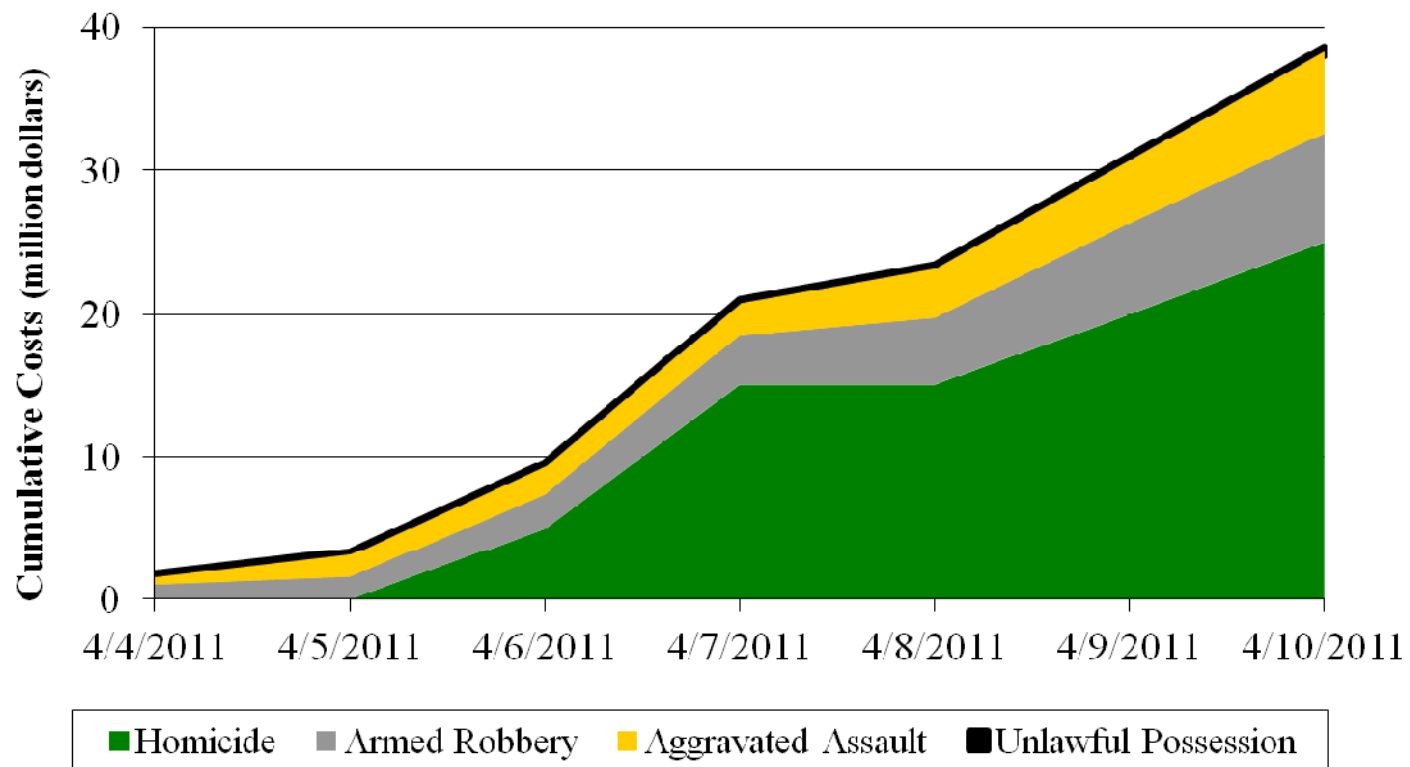
Armed Robberies 3 x \$50,000 = \$150,000

Unlawful Possessions 3 x \$500 = \$1,500

---

**Total Cost of Gun Crime for Week: \$371,500**

In just six cities, one week of gun crime generated a price tag of \$38.57 million



# **What are we doing about gun violence?**

*What are the most effective strategies to combat gun violence? Where should we be focusing our efforts?*

# Most Effective/Most Used Strategies

## Gun Enforcement and Gun Violence Prevention Practices among Local Law Enforcement Agencies

Strategy	% Yes
Submit Information on felons with guns to U.S. Attorney's Office for prosecution	39
Remove guns from scenes of domestic violence calls	37
Multi-agency and community partnerships to address enforcement, prosecution, and prevention	34
Focusing on gangs (prevention programs, suppression, etc.)	32
Check recovered firearms for ballistic matches	29
Directed patrols or specialized units emphasizing gun detection in hotspots	29
Targeting known gun offenders through investigation, surveillance, and warrants	29
Local gun trafficking investigations with ATF	27
Enhanced monitoring of high-risk probationers and parolees	24
Joint initiatives with ATF to target gun offenders and hotspots	24
Joint initiatives with state/local prosecutors to prioritize gun offenders	23
Cross-jurisdictional and information sharing efforts to track violent offenders and groups	21

Based on a survey of 164 urban police agencies. Unless otherwise noted, missing data rates were negligible.

**Source:** Koper, 2011. Gun Enforcement and Gun Violence Prevention Practices among Local Law Enforcement Agencies: A Research and Policy Brief. Police Executive Research Forum (PERF).

# Costs of Firearm Crime in 2010

**Gun Homicide** 8,775 incidents x \$5 million per incident = **\$43,875,000,000**

**Armed Robbery** 128,793 incidents x \$50,000 per incident = **\$6,439,650,000**

**Aggravated Assault** 138,403 incidents x \$55,000 per incident = **\$7,612,165,000**

**TOTAL: \$57,926,815,000**

**PERF gratefully acknowledges support from the Joyce Foundation for this research.**

**TheJoyceFoundation**